



TELEPHONE
WARBOROUGH 118

TELEGRAMS
BEAUREGARD
WALLINGFORD

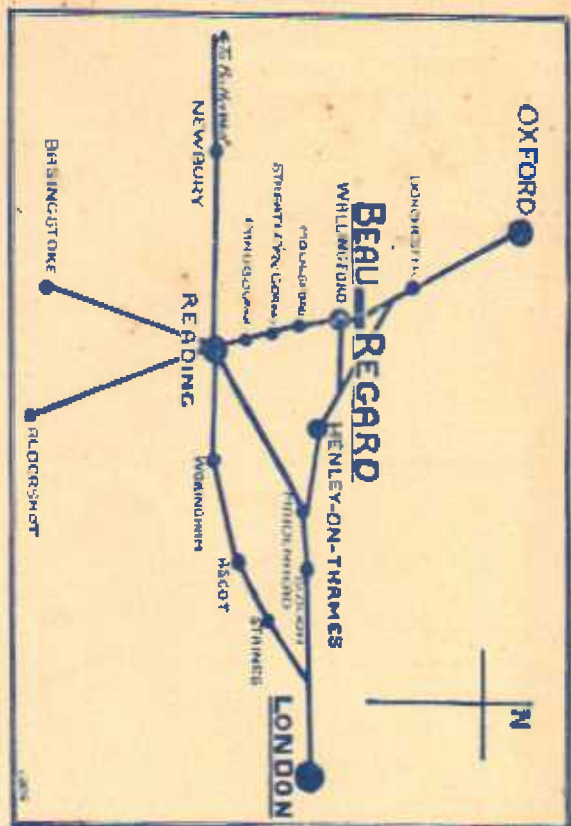
*A THAMES-SIDE BEAUTY SPOT
FOR HOLIDAYS OR WEEK-ENDS*

FULLY LICENSED

OPEN TO NON-RESIDENTS
DANCES EVERY WEEK-END

RESIDENT PROPRIETOR

A. G. BARWELL



WALLINGFORD AND ITS SURROUNDINGS

WALLINGFORD is a quaint old riverside town, with a chequered history, extending to ancient British days. Of the important Norman Fortress, Wallingford Castle, little remains but an ivy mantled tower. In the interesting museum, however, are relics which throw light on its memory and the important part it played in the troublous times between its erection in 1071 and its destruction in the Civil War (1646). At Dorchester (2 miles) is the Abbey which is regarded as one of the most interesting in the country. Originally founded about 635 A.D., it displays workmanship of several periods. The lovely Jesse window is its most remarkable feature. Ewelme, a village 3 miles distant, is visited on account of its prettiness; and the church founded by a Fifteenth Century Duchess of Suffolk, is of interest. Beautiful scenery is encountered both up and down stream.

Sutton Courtenay, Nuneham Courtenay, and Abingdon; Moulsoford, Streatley, Goring, Pangbourne and Mapledurham, are among the charming places within a few miles. The Chiltern Hills and the Berkshire Downs are equally near. Henley 11 miles, Oxford 13, Reading 15 and London 46.

GENERAL INFORMATION ON ROUTE ETC

RAILWAY STATIONS

Wallingford, G.W.R., 1½ miles. Cholesey, G.W.R. Main lines, 3 miles.

COACH SERVICE

South Midland runs from Victoria to Oxford and return. Period return to 'The New Inn', Shillingford, 7/- . The route is *via* Warwick Road, Chiswick, Great West Road, Slough, Maidenhead, Henley, Shillingford (Beau Regard stop), Oxford.

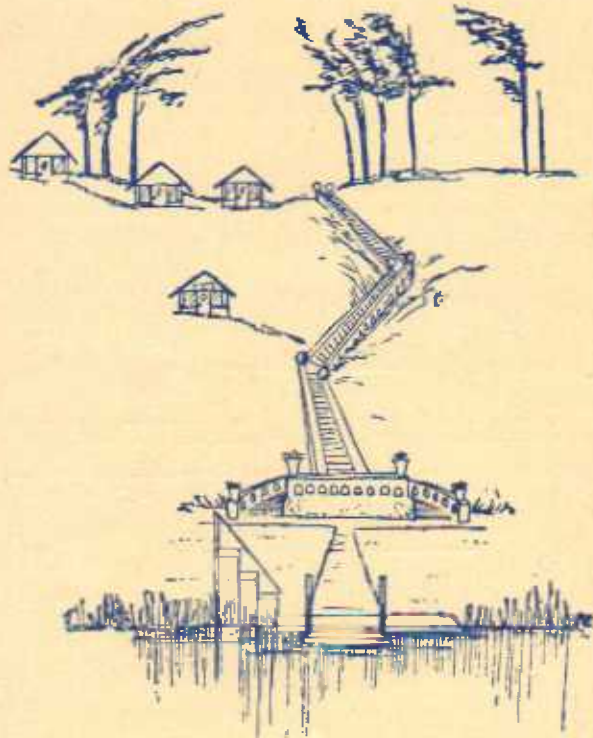
BUS SERVICE

Frequent service to and from Oxford, Reading, Henley, etc.

Taxis will meet Coaches and Trains as required.

CARAVAN SITES

Hard or Grass Standings. £1 per week or reduced Terms for 6 months or longer. 10 per cent discount for Members of recognized Caravan Clubs.



RIVER MOORINGS

For all types of craft. Deep backwater. Flush sanitation. Hot baths. Tap water. All amenities.

SWIMMING IN RIVER OR

(FREE TO RESIDENTS)

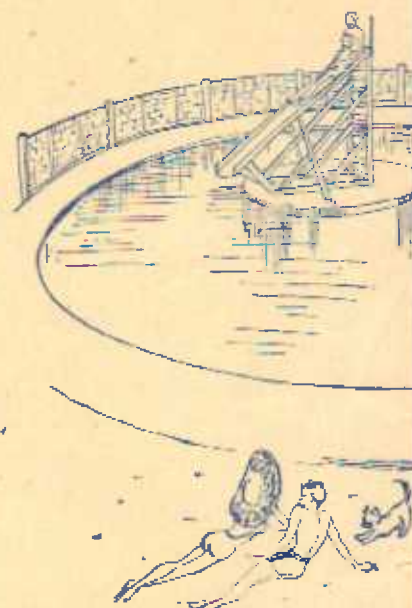
10 Acres of Pine and Cedar Timbered Grounds sloping down to the River Thames.

Every facility—all amenities.

FISHING BOATING AND TENNIS

NEAR BY
GOLF, RIDING,
SQUASH

AND
PLACES OF HISTORICAL
INTEREST



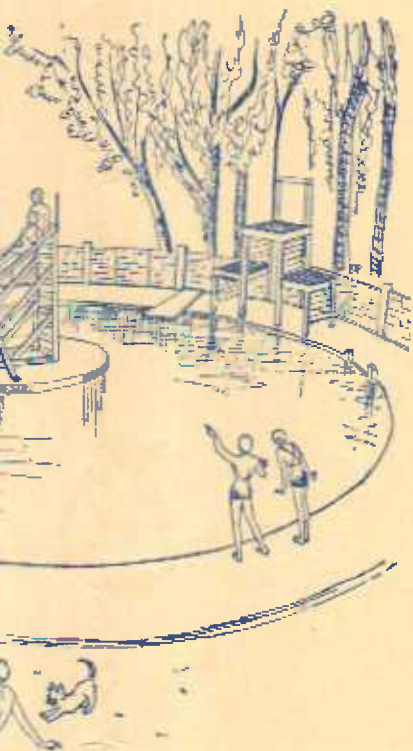
MEALS (Non Residents)

PLAIN TEA 1/6 WITH SALADS 2/6 LUNCH
A LA CARTE MENU AVAILABLE FOR A

OR CIRCULAR POOL

Residents— Adults, 1/-; children, 6d

Non-Residents— Adults, 1/6; children, 9d



ANY PARTIES
CATERED FOR

DANCES
EVERY
WEEK-END

OPEN TO NON-
RESIDENTS
EVERY DAY

2/6 LUNCH & N 3/-
LE FOR ALL MEALS

DINNER 3/-

SUPPER A LA CARTE

SWISS CHALET

Furnished and electrically lit—Cedar Tiled.

WEEK-ENDS: Friday Dinner to Sunday Supper—
32/6 per head inclusive

Saturday Tea to Sunday Supper—
19/6 per head inclusive

WEEK 1 June to 30 September £4-14-6

30 September 1 June . . . £4-4-0

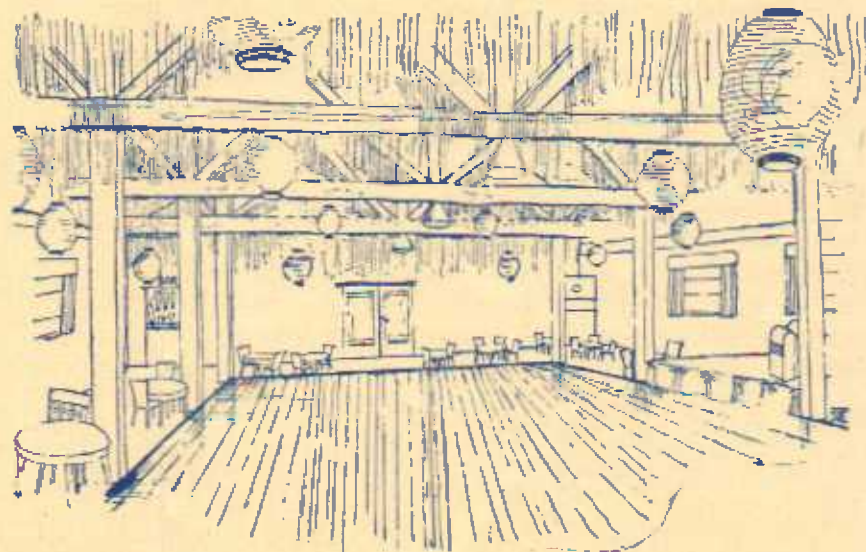
Children under 10 years £3-3-0

Charges by Day are 15/- per head, inclusive.

N.B. Linen, Towels and Soap cannot be provided,

When booking please state ages of children (children under 2 years old cannot be accommodated) and enclose a deposit. Extras—Baths 9d Dogs 7/6 per week.

Six Monthly or Annual Lets without full board by arrangement. Small Chalets for 2 Persons per year £35. Large Chalets for 2 or 4 Persons per year £50



RESTAURANT AND BALLROOM

FULLY LICENSED