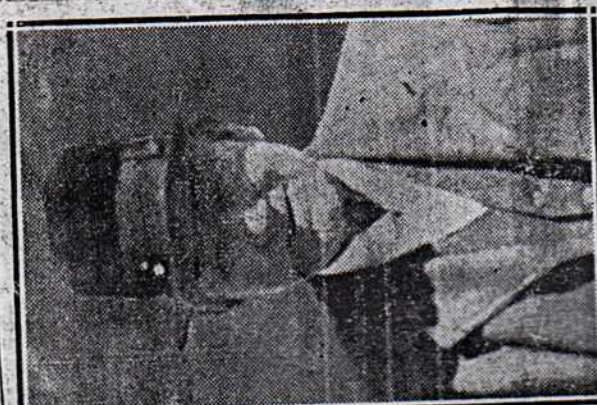


## IN MEMORY



**THE LATE MR. GEORGE ALFRED WHITTLE.**

In loving memory of my dear Husband, George Alfred Whittle, who died February 9th, 1941.  
 Your end came sudden, Husband dear,  
 It made me weep and cry—  
 But oh the hardest part of all—  
 One year has passed, how long it seems;  
 But in our heart your face still beams;  
 We who love you only know  
 How much we lost one year ago.  
 Sleep on, dear Husband, and have rest,  
 On earth there is trouble, in Heaven  
 —there is rest.  
 Will always be remembered by his loving  
 Wife, Mrs. L. Whittle.

In loving memory of my dear Father, George Alfred Whittle, who passed away on February 9th, 1941.  
 A wonderful Father to help and aid,  
 One who was better God never made.  
 A tireless worker, loyal and true,  
 One in a million, dear Father, were you.  
 Always remembered by his loving Son  
 Stanley.

In loving memory of our dear Father, George Alfred Whittle, who passed away February 9th, 1941.  
 A little token true and tender,  
 Just to show we still remember.  
 Beautiful memories are all that are left.  
 Ever remembered by Son Joe, Daughter-in-law Louise, Grandson and Grand-daughter  
 Joey and Marie.

In ever loving memory of my dear Father, George Alfred Whittle, who departed this life February 9th, 1941.  
 Father dear, when you were here,  
 —there seemed so bright and gay.

## IN MEMORY



**THE LATE MRS. SARAH ANN MARTIN.**

In loving memory of Sarah Ann Martin, who passed away February 10th, 1940.  
 Your end came sudden Sarah dear,  
 It made us weep and cry.  
 But oh the hardest part of all,  
 You never said "good-bye."  
 Two years have passed, how long it seems.  
 But in our hearts your face still beams.  
 We who loved you only know  
 How much we lost two years ago.  
 From her loving Husband and Family,  
 Jimmy, Carrie, Cassy, Peter, Billy, Sarah  
 and George.

